

Love Grows Here

A Legacy of Faith, A Foundation of Fire

From Lightning to Legacy: Why Nacoochee Endures

For nearly 200 years, Nacoochee Methodist has risen from the ashes—now we're building again, together.

BUILT ON RESILIENCE. SUSTAINED BY FAITH

Since the early 1800s, Nacoochee Methodist Church has stood as a spiritual home in the



Sautee Nacoochee Valley. Our story began in the days of Methodist circuit riders, with simple gatherings in



what was called the "White Church"—a place for all people to hear the Word, regardless of their background.

In 1836, Major Edward Williams donated six acres to the Methodist Episcopal Church. From there, a congregation was born, and for generations we've gathered, worshiped, and rebuilt—through fires, growth, and change.

Our red brick sanctuary, completed after the 1943 fire, has served us faithfully for eight decades. Now, as we look toward the future, we're called to enhance our facilities—building upon the strong foundation our predecessors laid.



THE JOURNEY TO THIS MOMENT

This project has been in the making for more than 20 years, delayed at various points by challenges such as the Great Recession, cost increases, the COVID-19 pandemic, and the congregation's decision to disaffiliate from the UMC. Through it all, our building fund has continued to grow through wise stewardship and faithful giving.

On November 18, 2024, the Church Council approved moving forward with the construction of a new sanctuary. At that time, the building fund held more than \$2.5 million. Thanks to wise investing, that amount has grown to nearly \$2.7 million. With these resources in place, the Council adopted the plan for a free-standing sanctuary, and the congregation affirmed the decision.

The building process is now officially underway. This isn't a leap into the unknown—it's the next step in a journey God has been leading for nearly two centuries.

Our "Love Grows Here" Capital Campaign has three clear purposes:

1. To raise enough funds to enter the new sanctuary debt-free—giving our children and grandchildren a gift of financial freedom
2. For our congregation to grow spiritually—drawing closer to God and to each other through prayer, Scripture, and generosity
3. To give 10% of what we raise to missions (local and/or world), to be decided by the church council after the campaign

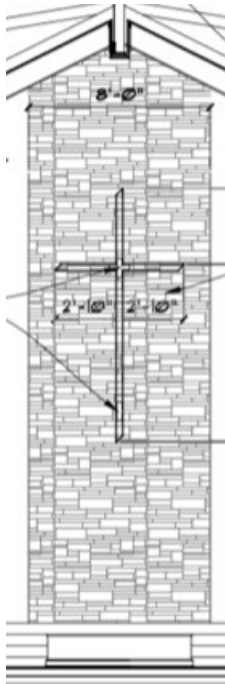


A SANCTUARY DESIGNED FOR WORSHIP

The new sanctuary will be welcoming and worshipful, with comfortable padded "pew chairs," wide center and side aisles, and a spacious chancel area—plenty of room for both the Praise Band and choir without rearranging between services. The worship space will accommodate over 200 people, with overflow capacity provided via a large TV monitor in the multi-purpose room just off the Narthex.



DID YOU KNOW?



The focal point of worship will be an 11-foot tall, backlit cross centered against a floor-to-ceiling rock wall. This dramatic feature, combined with oak-stained prayer rail and ceiling beams, creates a worshipful atmosphere that honors both traditional and contemporary elements.

We've always rebuilt with faith. Now we build with purpose.

Visit the Love Grows Here page at NacoocheeMethodist.com for daily scripture reading and information.

The steadfast love of
the Lord never ceases;
his mercies never come
to an end; they are new
every morning; great is
your faithfulness.
Lamentations 3:21-23

Nacoochee Methodist Church

P. O. Box 426

Sautee Nacoochee, GA 30571

NacoocheeMethodist.com

office@nacoocheemethodist.com

Keith Windmiller, Pastor

Our purpose is to know Christ and make Him known to all.